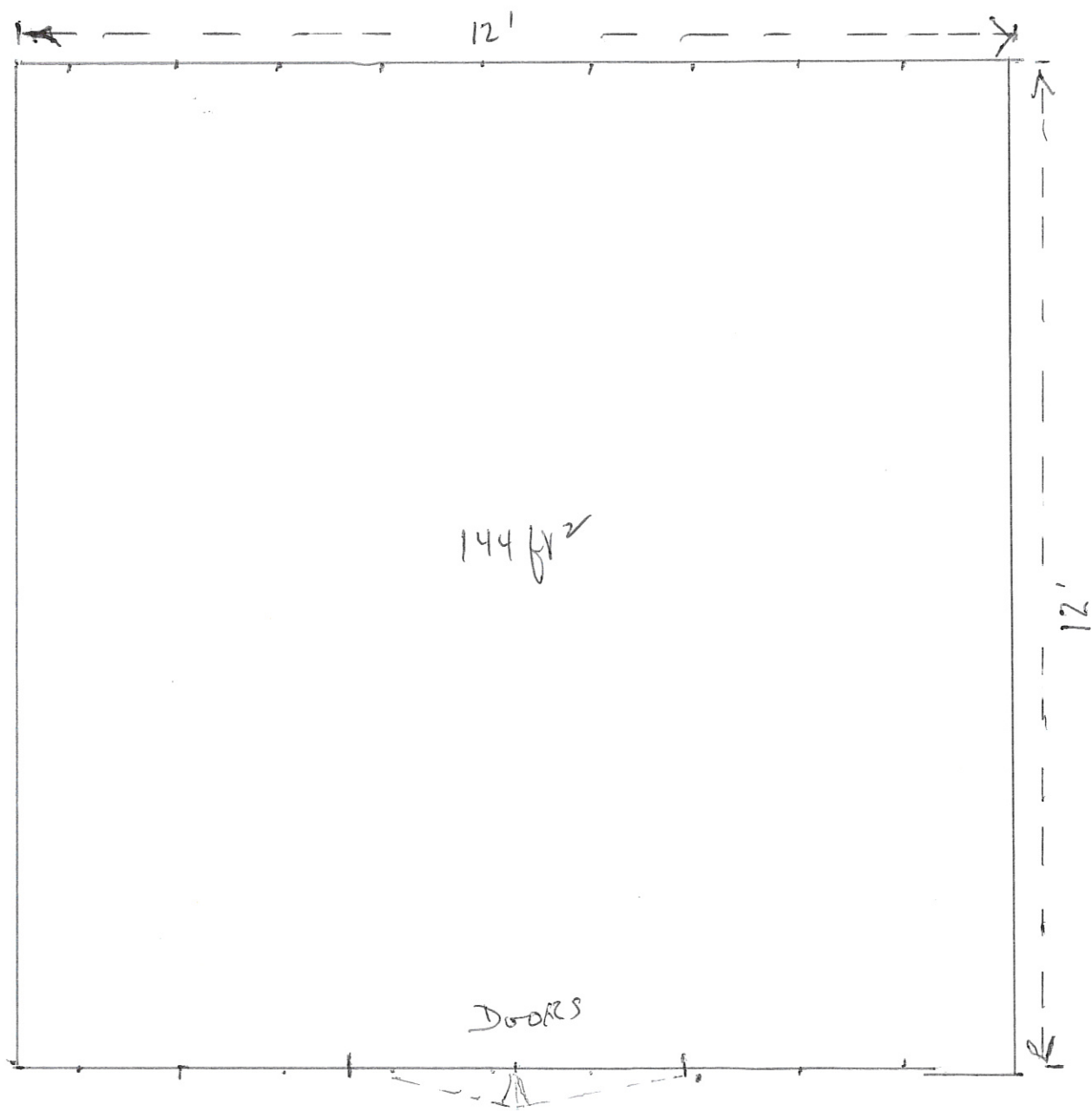


Siding 6" exposure
Textured Cement Board
fire proof

10'

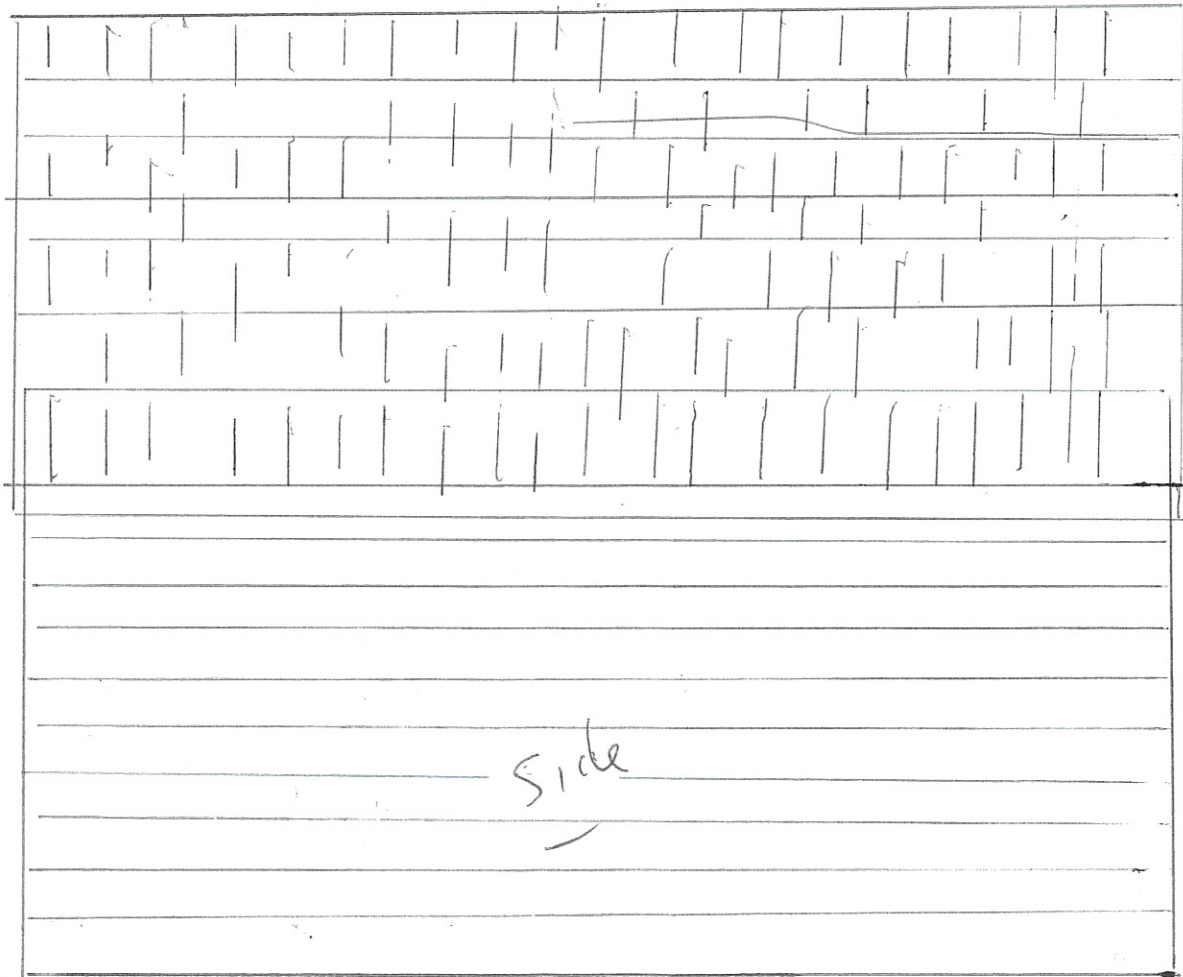
Dark Gray Color

13050 Dunwoody Dr, Elm Grove



On a 4" slab foundation
16" cc. 2x4 construction

13050 Dunwoody Dr. Elm Grove



Asphalt Shingles - Black
Siding - Dark Gray

Textured
Cement Siding
6" exposure.

13050 Dunwoody Dr
Elm Grove